

# SimaPro 7

**Demo Manual**



product ecology  
consultants

# Short Introduction to SimaPro 7

March 2006



## Colofon

Title:	Short Introduction to SimaPro 7
Written by:	PRé Consultants Mark Goedkoop
Report version:	1.0
Date:	March 2006
Language:	English
Availability:	PDF file supplied with the demo version
Copyright:	© 2002-2006 PRé Consultants. All rights reserved. PRé Consultants grants the right to print the PDF version of this manual. Parts of the manual may be reproduced only if a clear reference is made that PRé Consultants is the author. The manual may not be used for commercial purposes.
Support:	phone +31 33 4555022 fax +31 33 4555024 e-mail sales@pre.nl website www.pre.nl

### The fast lane...

If you have only 15 minutes: Install the demo version of SimaPro and start by running the coffee machine wizard. The wizard will guide you through SimaPro and give a generic overview of its capabilities.

### Free LCA course with the demo

Use the demo and accompanying tutorial to take a free course in LCA. The tutorial can be found as a PDF file on [www.pre.nl/simapro/manuals](http://www.pre.nl/simapro/manuals), on the SimaPro CD and via the SimaPro Help menu. For background information about LCA methodology read the "Introduction to LCA with SimaPro", also found on this site.

*Please note that the demo version has an important limitation: you can use the save command only 16 times, enough to run the examples in the tutorial. Please note that the demo has a limited dataset.*

# Contents

<b>Your entry to LCA with the SimaPro demo .....</b>	<b>1</b>
USE THE SIMAPRO 7 TUTORIAL .....	1
UNDERSTAND THE LCA METHODOLOGY.....	1
<b>Why you need LCA now.....</b>	<b>2</b>
<b>Why SimaPro is so successful .....</b>	<b>3</b>
INTRODUCING PRÉ CONSULTANTS.....	3
INTRODUCING OUR INTERNATIONAL PARTNER NETWORK .....	3
<b>Starting the Demo version .....</b>	<b>4</b>
THE USER INTERFACE .....	4
<b>Experience SimaPro with the guided tour .....</b>	<b>5</b>
<b>Experience SimaPro: enter some data.....</b>	<b>9</b>
<b>Other examples in the Tutorial .....</b>	<b>12</b>
INPUT OUTPUT .....	12
MONTE CARLO ANALYSIS .....	12
DEVELOPING WIZARDS.....	12
<b>New: Parameters revolutionise your work .....</b>	<b>13</b>
<b>New: Make links to other data sources .....</b>	<b>14</b>
NEW DATA LIBRARIES .....	14
NEW IMPACT ASSESSMENT METHODS .....	14
<b>Finding the SimaPro that fits your needs .....</b>	<b>15</b>
THREE SOFTWARE VERSIONS FOR PROFESSIONAL USE .....	15
SINGLE AND MULTI USER .....	15
THREE EDUCATIONAL VERSIONS .....	15
TEMPORARY AND INDEFINITE LICENCES AND SERVICE CONTRACTS .....	15
<b>Data libraries for SimaPro .....</b>	<b>16</b>
<b>Join the SimaPro LCA community .....</b>	<b>17</b>
LANGUAGES .....	17
ORDERING PROCEDURE.....	17

## Your entry to LCA with the SimaPro demo

The SimaPro demo provides a unique opportunity to get hands-on experience with Life Cycle Assessment (LCA). It is designed to provide you with a short LCA course, to show you the power of the LCA concept and of course to convince you that SimaPro is really the smartest LCA tool. We invite you to follow some examples in this booklet to explore the Demo and discover new LCA applications.

### Use the SimaPro 7 Tutorial

The Short Introduction to SimaPro 7 is intended to provide a short overview. The *SimaPro 7 Tutorial* gives you step-by-step instructions to follow the examples described in this booklet. You can use the Tutorial with the Demo version.

### Understand the LCA methodology

For more information on the LCA methodology and for practical implementation advice, we suggest you download and read our *Introduction to LCA with SimaPro 7*. It can be found on [www.pre.nl/simapro/manuals](http://www.pre.nl/simapro/manuals).

#### Two different versions of the demo database

There are two different version of the demo:

- The full version comes with the complete *Starter* database. This version is distributed on CD, and can be downloaded via internet if you have a broadband connection. The file size is approximately 30 Mb. The filename is SimaProDemoFull.exe.
- A small version is distributed via Internet; it contains the *Demo* database. The file size is about 15 Mb, which means it is still possible to download it over a normal internet connection. The Filename is SimaProDemoSmall.exe.

The most important difference is that the Small version does not contain input output databases. See also page 14.

If you do not have a fast Internet connection and you want to have the full demo version, please request a CD via the PRé website, or the website of one of its partners.

#### Language choice

The SimaPro demo can be tried in several different languages, such as Spanish, French, Italian, Danish, German, and Dutch etc. A Japanese version is available on request.

The language of your preference can be specified during installation. After installation, you can still change this under the *Options* menu.

#### Requirements

The SimaPro can be run on any computer using Windows 98 and up. The memory requirements are dependent on your Windows version, but in general the demo will work fine with 128 Mb of memory. Processor speed is especially important for the Monte Carlo exercise.

## Why you need LCA now...

The concept of life cycle thinking has become the focus of product policy development. Consumers want to know the story behind the product. Life cycle assessment (LCA) methodology is at the heart of all these developments.

### **Integrated product policy (IPP)**

IPP will transform regulation from traditional environmental legislation to product chain management. You will need LCA to stay in tune with regulation.

### **Give guidance to ecodesign teams with Key environmental Performance Indicators**

Clever product managers tell their designers to concentrate on just a few Key environmental Performance Indicators. You need LCA to determine which Key Performance indicators are really relevant for your products so you can guide and inspire your designers.

### **Ecodesign directive for Energy using Products (EuP)**

By 2007/2008 all new mass-produced energy using products in the EU must conform to the Ecodesign directive for EuPs. SimaPro contains the official EU methodology, so you can get to grips with this important development.

### **Environmental Product Declarations (EPD)**

Environmental product declarations are becoming very popular in many countries and industry sectors. LCA provides the basis for EPD; SimaPro contains virtually all available public databases needed to produce EPD's efficiently.

### **The sustainable consumption perspective and its impact on you**

In Japan, Australia and Europe studies have been carried out, identifying which products are causing the highest environmental load. These products will be prioritized in future policy development. Such prioritization studies use environmental input-output databases. SimaPro contains some of these databases. If you want to know what is at stake for your products and services you need SimaPro.

### **Sustainability reporting**

Over half the Fortune 500 companies publish sustainability reports, mostly using GRI guidelines. The boundary of most reports is now expanding from the corporate borders to include the entire life cycle, and the new G3 reporting standards emphasize this. Data collection within your corporation is not easy, but getting data from suppliers is really difficult. LCA databases can be an excellent data source to understand the issues within your entire supply chain. SimaPro is a powerful tool as it contains all major public data sources and input-output data.

### **Social and economic impacts**

Social impacts are often not easy to quantify and for this reason are difficult to include in LCA. In addition, social impact assessment methods are not well developed. SimaPro can handle quantifiable social and economic impacts very easily. You can define your own methodologies, or add social and economic indicators to existing methodologies.

## Why SimaPro is so successful

Since 1990, SimaPro has been the market-leading life cycle solution all over the world. Here are a few reasons:

- **Reliability and support.** The software is very reliable. If you do encounter problems we provide professional support through our helpdesk or our partner network.
- **SimaPro has the least life cycle costs.** Getting to grips with new software is often time consuming. SimaPro is easy to use, which saves a lot of learning time and thus costs.
- **The LCA Wizard helps you.** Do you find it difficult to develop your LCA model? Use our LCA Wizard! It will guide you through the process by asking you the right questions. You can also develop specific wizards for your own stakeholders, if you have a SimaPro Developer licence.
- **SimaPro comes with loads of data.** Around 10,000 inventory data records are available for SimaPro. Most are included for free with a licence.
- **SimaPro includes input-output datasets.** Use cost data to define your LCA model. Ideal data for screenings, or for estimating and assessing services. Combine cost and environmental data!
- **SimaPro evaluates uncertainties** in such a way that you can determine the significance of the differences in a comparison between product systems.
- **SimaPro is designed for LCA teamwork.** SimaPro is the only commercial LCA software that supports true multi user implementations. Your entire LCA team can work on a single database at the same time, even if they are in very different locations (using a network, Citrix or a similar solution).

## Introducing PRé Consultants

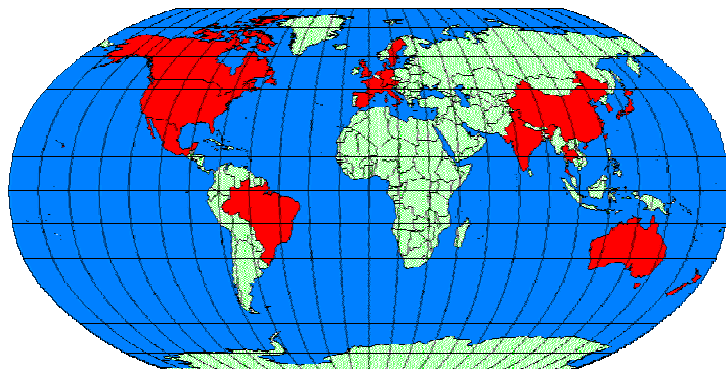
Since 1990 PRé Consultants has been delivering innovative solutions that help you to develop more sustainable products and services. We developed the world's leading Life Cycle Assessment (LCA) software SimaPro, the Eco-indicator 99 impact assessment methods, and many other solutions.

Our attitude is open and transparent. We collaborate and share ideas with many experts and we contribute to many international platforms. Sharing knowledge is our strength, because you benefit from it.

## Introducing our international partner network

Our worldwide partner network gives you access to local knowledge and support. Our partners are often the key LCA experts in their region. Many are well known internationally.

*Map of the SimaPro partner network, the red areas are covered by our partners.*



## Starting the Demo version

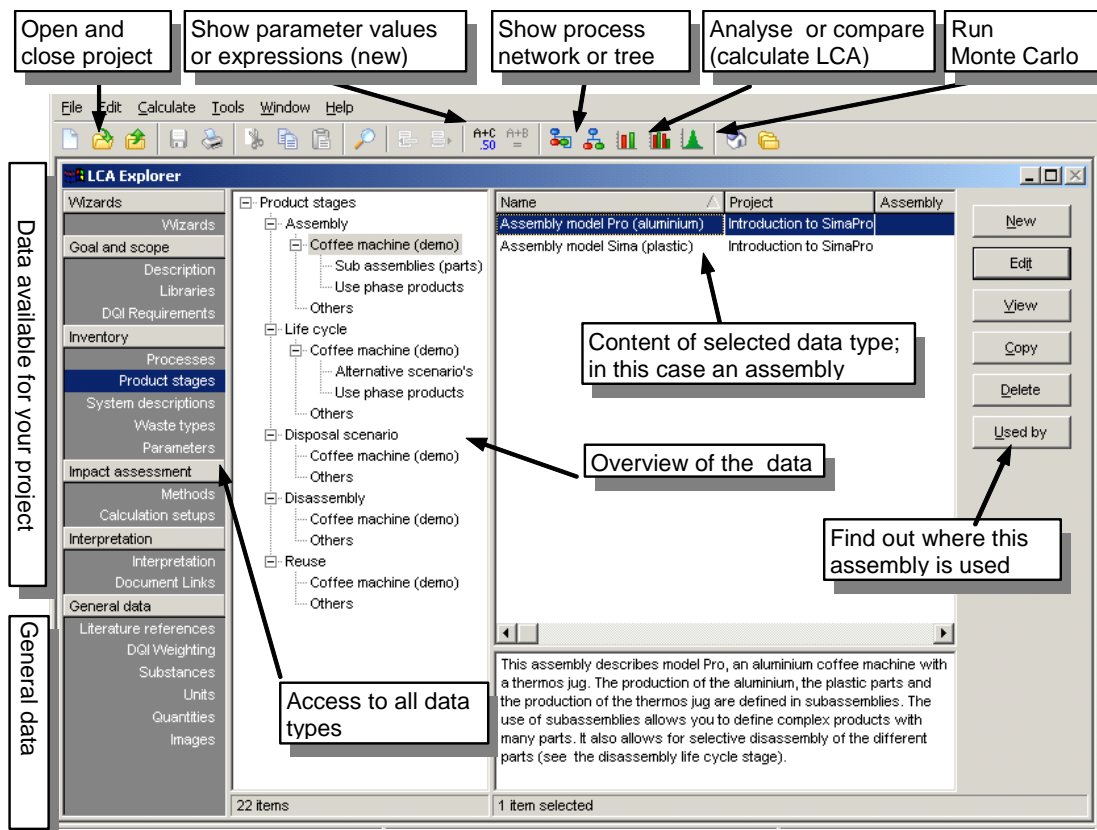
Upon starting the demo version you will be asked which SimaPro model you would like to test: Compact, Analyst or Developer. At the end of this booklet, you will find more about the differences. We suggest you select the Analyst version.

### Restrictions in the demo version

Please note that the demo version has an important limitation. You can use the save command only 16 times. If you run the examples and also the Tutorial you will use this capacity quickly, so be careful. Re-installing the demo will not help to overcome this limit.

### The user interface

The user interface is structured according to the basis steps of an LCA, as described in the ISO standard. The index on the left-hand side provides access to all types of data. The buttons at the top of the page provides access to the most important functions. The combination of the index and the buttons are in fact all you need to have to operate SimaPro. When in doubt, press F1 to get help.

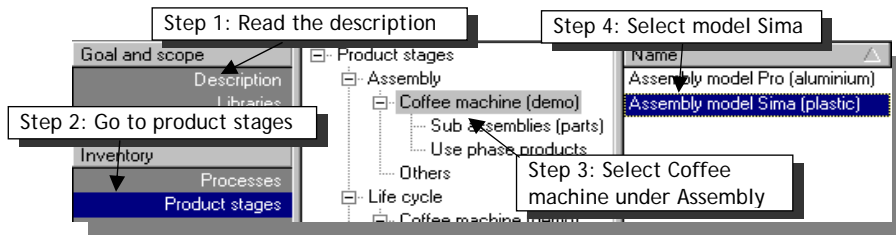



We prepared several examples that allow you to get to know SimaPro (all found in the detailed tutorial). Which example you would like to follow depends on the time you have available and the application you have in mind. This booklet only introduces you to the key aspects.

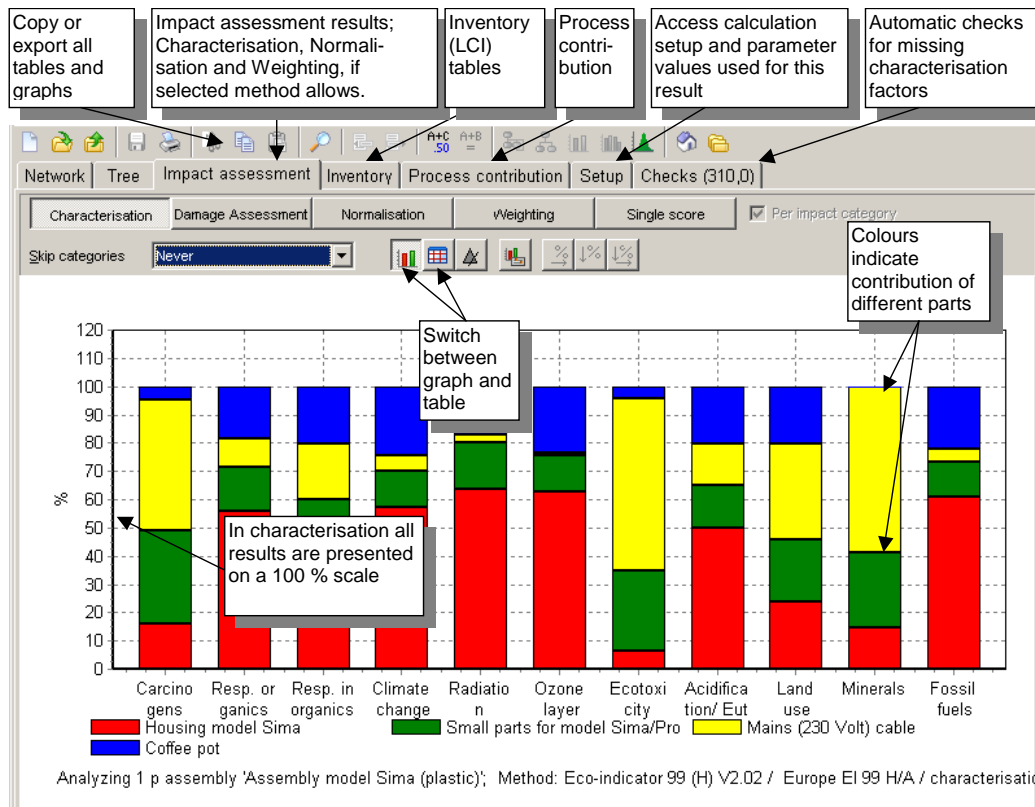
## Experience SimaPro with the guided tour

Start with running the coffee machine wizard, by double clicking on its name. The wizard will guide you through and give a generic overview of the capabilities of SimaPro. Take some time to read the texts on the screen.

After finishing the wizard, you can also go through the example step by step via the normal interface. Follow the steps in this illustration:



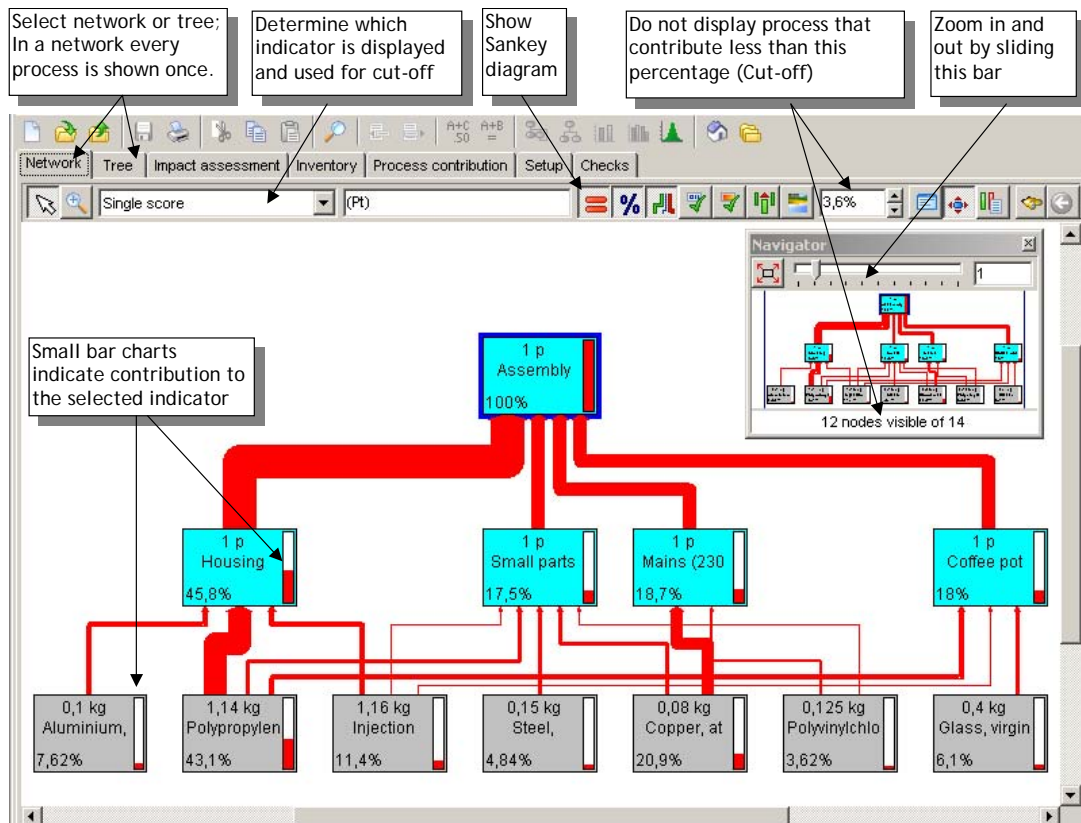
Now click on the Analyse  toolbar button to see the inventory and impact assessment results, as well as the process contributions (see figure below).



## Understanding the characterisation result screen

The result screen you just created shows the characterisation results. As all impact categories have different units, they are plotted on a percent scale. The colours indicate the relative contribution for different parts of the product, in this case the 4 sub-assemblies. This screen has many possibilities. Please experiment and inspect the different impact assessment stages, like normalisation and weighting; inventory results and process contributions.

Click on the Network tab in the upper left-hand corner. A network presentation of the SimaPro model is generated. A warning message will tell you that the network is not completely visible. Click OK, to get a window as below.



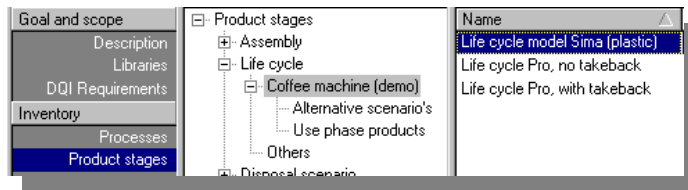
The network screen has a wide range of options that you can experiment with. Try changing the cut-off setting, or try changing the indicator that is used.


## Understanding the network screen

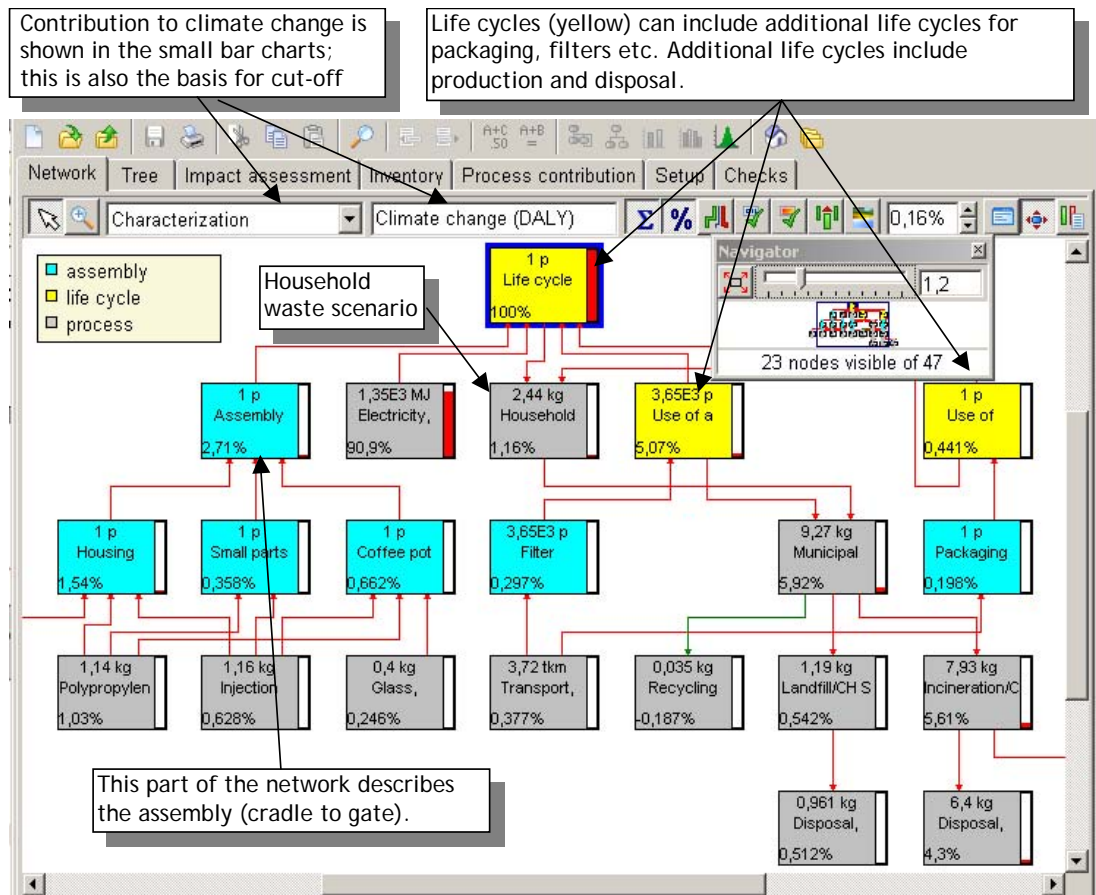
Each grey box represents a process, each blue box represents a (sub)assembly. The small red bar charts (or thermometers) indicate the environmental load generated in each process and its upstream processes. This is a very useful feature, as you can trace the origins of the environmental load and identify hotspots.

### Analysing the full life cycle

So far only production of the coffee maker has been taken into account. Now open the *Life cycle Model Sima (plastic)*, in the same way you opened the assembly.




Click on the  button to get the same analysis as in step 3, but this time the analysis of the whole life cycle is shown. Inspect the relative contribution of the life cycle stages. Now select the tab marked with *Network* to get a window as below. You will be able to recognize the assembly, the use processes and the disposal processes. The filter and the packaging are both defined as an additional life cycle, each with their own assembly and disposal stage.



### Comparing two coffee makers

Go to *life cycle*, Select the *Life cycle Sima (plastic)*, the *life cycle Pro, no take back*.

Click the compare button , and you will see a comparison of the two life cycle models. Model Sima has a higher load on all impact categories, except for the depletion of minerals and respiratory organics.

This result can be explained by the much higher electricity use due to the hotplate. The resource depletion score for model Pro is caused by the use of Aluminium for the housing. Double click on the columns and get a specification per substance, and see how easy it is to find this. Again we invite you to explore the many other features of this comparison screen.

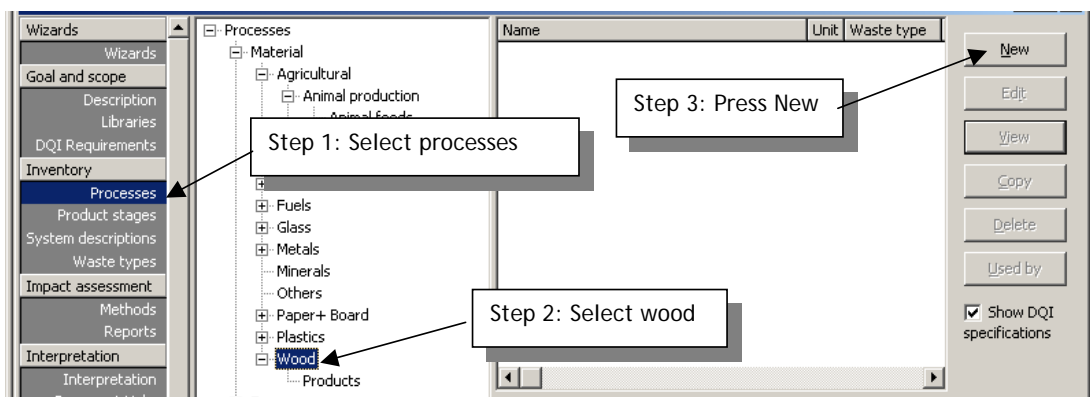
## Experience SimaPro: enter some data

In the previous example you used data already in SimaPro. Below we show you how to enter a process and make a very simple process network. Open the project 'Tutorial with wood example', by clicking on File, Open project in the menu.

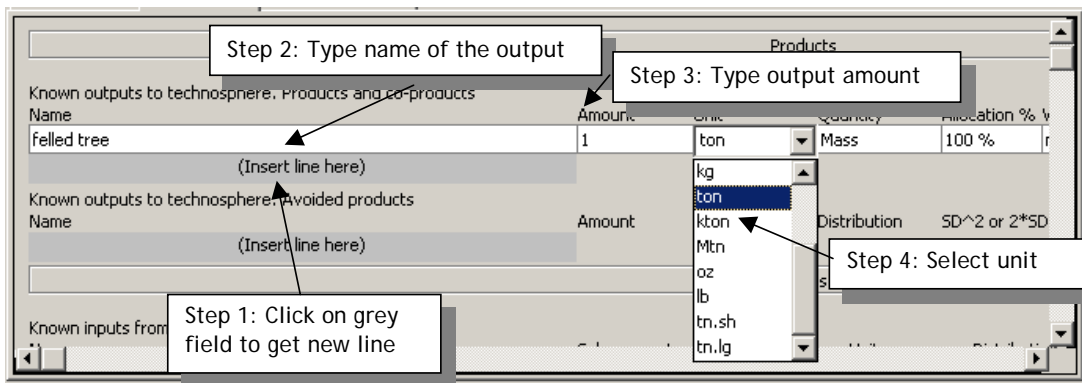
In this example, we enter simple data about the felling of a tree:

- About 1.25 ton of wood is felled to produce a tree trunk of 1 ton. The rest (branches and tops) is left in the forest.
- We use a chainsaw for felling the trees. On average it takes 3 minutes of sawing per ton of usable wood.

Start entering this data by following the steps, shown in the figure below:



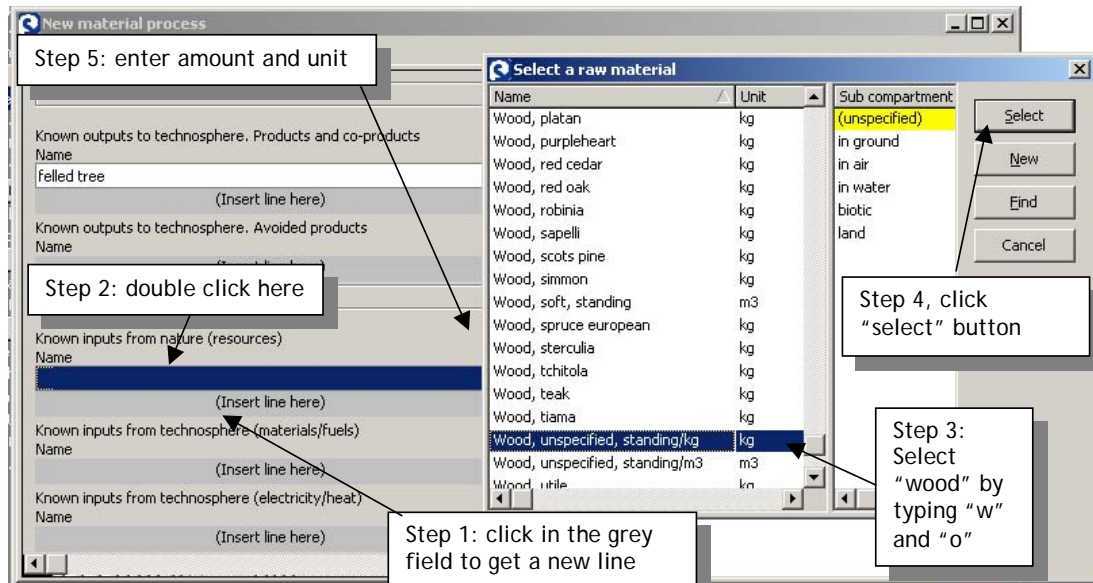
The figure below shows the top section of the screen that appears. Note that there are four tabs; use the middle tab, input/output. Follow the steps in the figure.



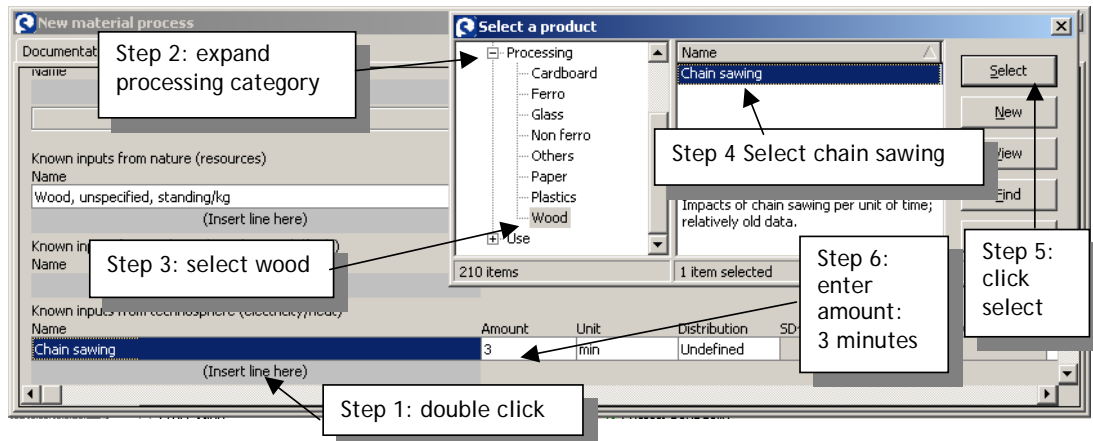
The next figure describes the inputs to the process. Note that there are three lines in the record where you can specify inputs:

1. **Known inputs from nature (resources)** is meant to contain a list the resources that are directly taken from nature. In this case, the wood that is extracted from the forest.
2. **Known inputs from technosphere (materials and fuels)**. Here you enter inputs with a mass unit that come from other SimaPro processes and not from nature.
3. **Known inputs from technosphere (electricity and heat)** is meant to have non-mass inputs. It is used to enter the data on chain sawing, as this process is predefined in the demo database.

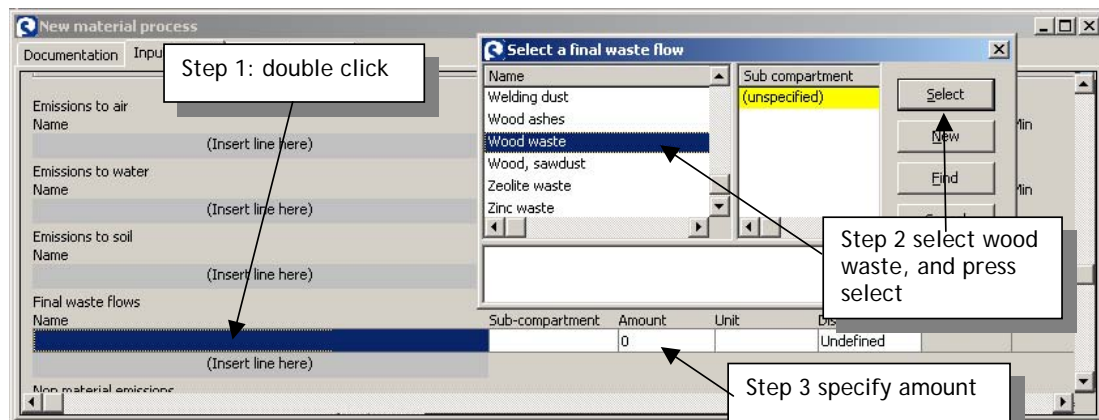
Follow the steps below to add the natural resource wood, and add 1250 kg or 1.25 ton as input (SimaPro converts units automatically).




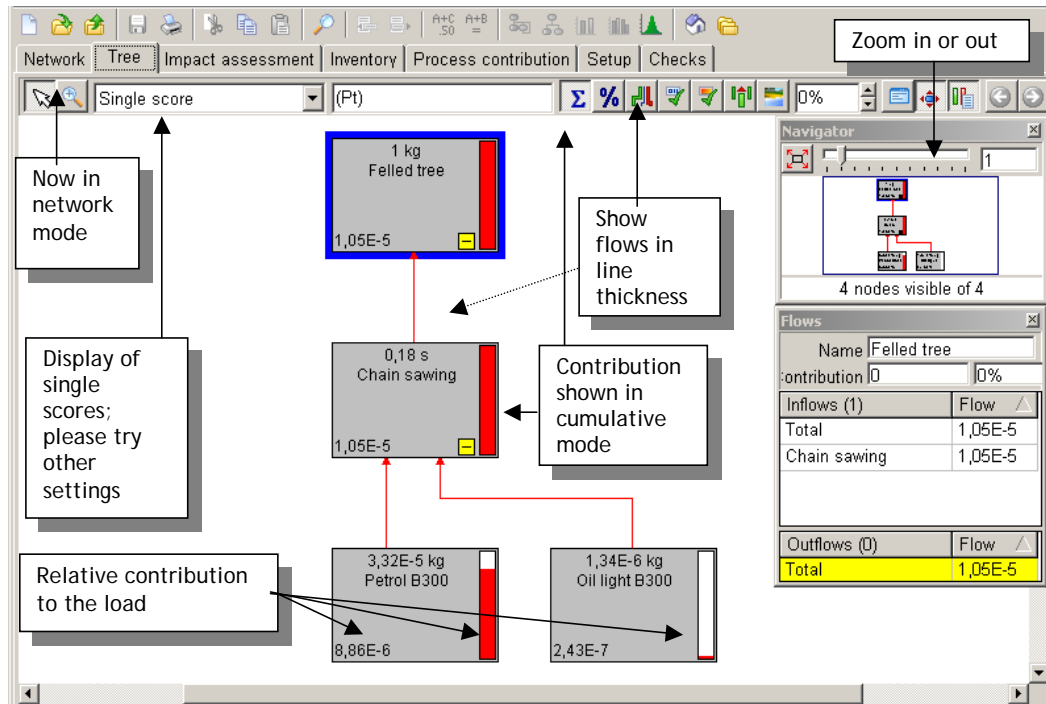
Similarly, add the process "Chain sawing" following the steps below.



The lowest part of the screen is used to specify emissions and wastes. Please inspect the different categories. Now specify the 250 kg wasted branches left in the forest, as indicated on the next page. Press F1 for further explanation.



When you have entered the data, click the network button  to get a first look at what you have created. You do not have to save the process at this time. Simply click the network button. The screen will look like the figure below.



As you can see, the top process "felled tree", gets an input from the chain sawing process we have entered. On its turn, the chain sawing process has two inputs, fuel production and lubricating oil production. As you can see, by entering links between processes, you can build up complete process trees. Use the SimaPro 7 Tutorial to create a complete life cycle of a wooden shed in your garden.

### Social and economic issues

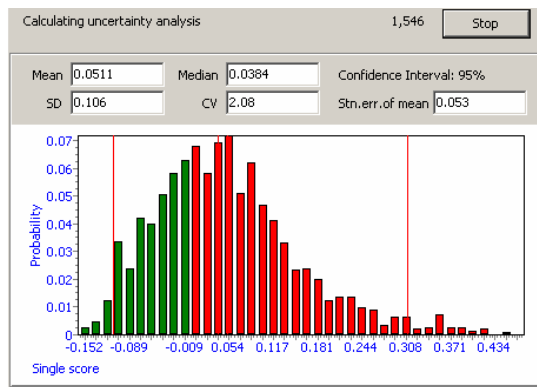
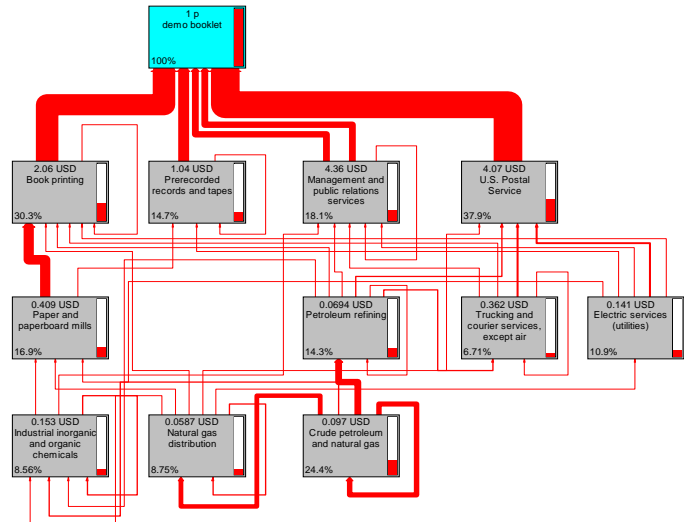
Please note that there are many more problems associated with wood felling, including social aspects that include the rights of indigenous people and the destruction of habitat. Note that SimaPro now also has a section to define social issues, such as jobs created. These could be expressed as minutes of labour needed to fell a ton of wood. However, social issues are usually not readily quantifiable, and therefore not so easy to integrate in a quantitative tool such as LCA.

## Other examples in the Tutorial

In the SimaPro Tutorial you can follow nine “lessons”. The first lessons are based on the coffee machine and the wood example above; other lessons covers subjects like, using the Wizard, Using Input Output Analysis and Monte Carlo. This means the Demo and the Tutorial provide a completely free LCA course.

### Input output

SimaPro 7 contains a comprehensive Input Output database containing environmental data for all 500+ Commodities in the USA economy. This type of data opens up many new possibilities, like assessing the impact of services, and linking financial with economic data. In the graph we modelled the environmental impacts of producing and distributing the demo brochure for SimaPro using cost as a basis.

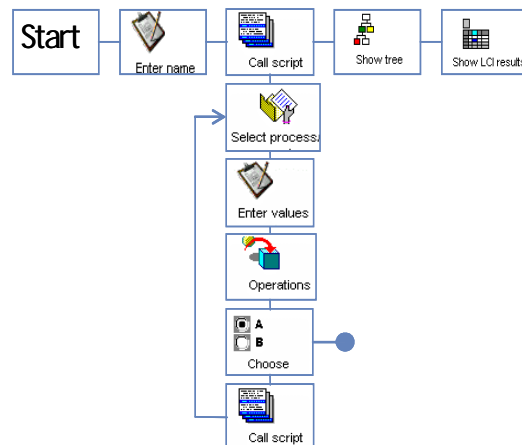


### Monte Carlo analysis

LCA data are full of uncertain numbers. These uncertainties can have different causes, like uncertain measurements or uncertainty about the representativity of a figure for the actual problem we are studying. This means we must ask ourselves how certain or uncertain the results are, especially when we are comparing data. SimaPro does not only calculate absolute uncertainties. It also examines if differences between product systems are relevant.

### Developing wizards

Users of a SimaPro Developer can develop new Wizards. This opens up possibilities to produce an interactive tool for non-LCA experts. The Wizard is an interface between the user and the tool. The user enters data on the product and the life cycle, and the Wizard translates this into consistent LCA results. A separate Wizard manual is available.



## New: Parameters revolutionise your work

Parameters let you model all kinds of relationships in your inventory data. This offers many new possibilities for simplifying your work:

- **Set switches for sensitivity analysis.** Use parameters to switch between different system boundary and allocation choices. Sensitivity analysis could not be easier.
- **Define non-linear relationships.**
- **Define and evaluate uncertainties in parameters.**
- **Evaluate alternative product scenarios.** Define a product system with parameters, then create two different sets of parameters and compare the environmental impact of these differences. There is no need to create and maintain alternative versions of the product system, instead you define your LCI only once.

The illustrations below show how parameters can be defined, how you create mathematical expressions and how you apply these in a process record.

Define parameters for allocation and transport mode

Define uncertainty range for the allocation percentage; you can also apply normal, lognormal and triangular distributions

Parameters that are only relevant within a process can be hidden, so they do not appear in parameter lists elsewhere

Name	Value	Distribution	SD <sup>2</sup>	oMin	Max	Hide	Comment
econall	60	Uniform		45	65	<input checked="" type="checkbox"/>	allocation % for chlorine based on market prices
barge	1	Undefined				<input type="checkbox"/>	Set barge=1 if ship is used

(Insert line here)

Name	Expression	Comment
Na_all_econ	100-econall = 40	allocation % for Na. This definition ensures total percentages add up to 100%, even during Monte Carlo runs

(Insert line here)

Define expressions, in this case for the sodium allocation factor. The formula is very simple in this example, but you can define all kinds of expressions

Define allocation percentages as parameters. SimaPro adds current value (=60%)

Name	Amount	Unit	Quantity	Allocation %
Chlorine	520	kg	Mass	econall = 60%
Sodium	470	kg	Mass	Na_all_econ = 40%

(Insert line here)

Name	Amount	Unit	Distribution	SD
H2 from natural gas B250	10	kg	Undefined	

(Insert line here)

Define Chlorine and Sodium as multiple outputs

In this example H2 production is not allocated, but treated as avoided product (system boundary expansion)

Name	Amount	Unit	Distribution	SD <sup>2</sup>	Min	Max	Comment
NaCl (100%)	1000	kg	Undefined				input of salt

(Insert line here)

Name	Amount	Unit	Distrib	SD <sup>2</sup>	Min	Max	Comment
Inland vessel B250	barge*200 = 200	tkm					if parameter barge = 1, ship is used
Truck 28t B250	100+(1-barage)*200 = 100	tkm					if parameter barge=0, no ship is use

(Insert line here)

Use formulas to replace barge with truck, depending on the setting of parameter "barge"

## New: Make links to other data sources

The SimaPro Developer version is an excellent communicator with other software systems. We developed two strategies to integrate SimaPro with other IT systems.

- Collect data from different sites in a spreadsheet or database such as MS-Access or any SQL database. Create a new process record, and make links to this spreadsheet as shown below. You can see the location and name of the spreadsheet and the data. The data in SimaPro are updated automatically.
- An alternative option to link SimaPro is the use of the COM interface.

	A	B	C
1	Location: Amsterdam		
2			
3	electricity	134	MWh
4	CO2	7	ton
5	SOx	77	kg
6	NOx	13	kg

Known inputs from technosphere (electricity/heat)		
Name	Amount	Unit
Electricity, low voltage,	'M:\data collection 2006\Data AMS V1.1.xls]Blad1!B3 = 134	MWh
(Insert line here)		
Outputs		
Emissions to air		
Name	Sub-compa	Amount
Carbon dioxide		'M:\data collection 2006\Data AMS V1.1.xls]Blad1!B4 = 7
Sulfur oxides		'M:\data collection 2006\Data AMS V1.1.xls]Blad1!B5 = 77
Nitrogen dioxide		'M:\data collection 2006\Data AMS V1.1.xls]Blad1!B6 = 13
(Insert line here)		

## New data libraries

We have added three new libraries:

1. EuP database: The official database and methodology used by the EU to set requirements in the Ecodesign directive for Energy using products
2. Danish LCA food database
3. Danish input-output database

## New impact assessment methods

We have added two new impact assessment methods:

1. The US EPA Traci method
2. The Impact 2002 method

For a full overview of available data libraries and impact assessment methods, see the following page or visit [www.pre.nl](http://www.pre.nl).

## Finding the SimaPro that fits your needs

### Three software versions for professional use

SimaPro is available for three different types of LCA users:

- SimaPro Compact for quick results
- SimaPro Analyst for detailed LCA studies
- SimaPro Developer for developing dedicated LCA tools

Name	Compact	Analyst	Developer
Import data (CSV + SimaPro database format)	Y	Y	Y
Powerful LCA wizards for model creation	Y	Y	Y
Define and edit parameters	N	Y	Y
Uncertainty calculation using Monte Carlo	N	Y	Y
Export (CSV and SimaPro database format)	N	Y	Y
Data Quality Indicator system	N	Y	Y
Advanced calculation-results and analysis	N	Y	Y
Import/export EcoSpold format	N	N	Y
Link parameters to external data	N	N	Y
Hide confidential data	N	N	Y
Create wizards for your target group	N	N	Y
Com interface to link to other software	N	N	Y

### Single and Multi user

All three versions are available as single and Multi-user. In the multi-user versions, several users can work in the same database. Each user may have distributed access rights to specific features or database projects: use a central database, even while working from different locations.

### Three educational versions

The combination of advanced features and the ease of use makes SimaPro an excellent tool for training and research. Already several hundreds of universities use one of our three educational versions, to teach thousands of students annually. *Educational versions are only available for Universities and other educational institutes that provide a written declaration stating the sole purpose of the software is to educate or for research.*

1. **SimaPro Classroom.** This version is similar to the multi user version of SimaPro Compact. 40 students can log into the same database simultaneously.
2. **SimaPro Faculty.** This version is similar to the single user version of SimaPro Compact. It may be distributed freely to registered students on the Faculty.
3. **SimaPro PhD.** This version is similar to the single user version of SimaPro Analyst. It is very suited for PhD projects and other research.

### Temporary and indefinite licences and service contracts

SimaPro can be licensed as:

- Indefinite license, with a one year free service contract
- Temporary license, with service included

A service contract gives you access to the helpdesk, two database updates per year and all software updates. Service contracts are automatically renewed, unless you cancel. Once you cancel, you cannot renew.

## Data libraries for SimaPro

SimaPro comes with a large set of data libraries. Together they cover 6.000 processes. All educational licences contain the Starter database, unless an ecoinvent licence is purchased. All professional versions contain the full ecoinvent license. Detailed information can be found in the Database Manuals.

Name and year	Content	Process count	database name		
			Analyst	Starter	Internet
Danish IO database	Detailed Danish Input output database for Denmark	793	X	X	
Danish Food database (2003)	Database on food, using Marginal approach, developed by LCA 2,-0	671	X	X	
Ecoinvent v1.2 (2005)	2600 processes on energy, transport, materials, etc. see <a href="http://www.eco-invent.ch">www.eco-invent.ch</a>	2600+	X		
Ecoinvent demo	Subset of 50 processes for demo (systems)	50		X	X
USA input output 2003	IO dataset for the USA compiled by CML Leiden	500	X	X	
Industry data 2001	Data published by industry associations, such as APME	74	X	X	
Idemat (2001)	Dutch database, compiled from different sources by Delft Uni. of Technology	508	X	X	
Buwal 250 (1997)	General materials, energy, transport and waste, Swiss pack. institute	248	X	X	X
ETH-ESU (1996)	ALL processes of the famous energy and transport database. ETH-ESU Zurich	1100+	X	X	
Franklin (1996)	USA database, on materials, transport and energy etc. Franklin associates	78	X	X	

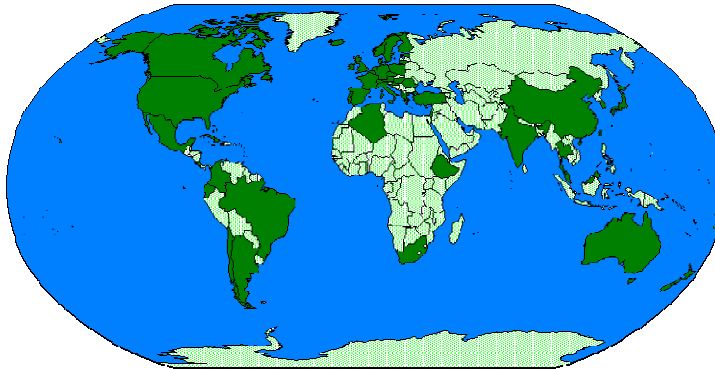
The table below briefly specifies the characteristics of the impact assessment methods in SimaPro. For more information, please consult the descriptions that come with the methods in the software or the Database Manual.

Name	Characteristics
Impact 2002	Damage approach; many similarities with Eco-indicator 99, but completely recalculated toxicity factors.
TRACI 2002	Midpoint method developed by US EPA.
CML 2 baseline 2000	Update of the 1992 method, more advanced models, and inclusion of fate analysis.
EPS 2000	Damage approach, using monetarisation (willingness to pay) instead of weighting by a panel.
Eco-indicator 99	Damage approach, uses category indicators at endpoint level. Three versions are included using different assumptions.
Ecopoints 97 (UBP)	Distance to target based on Swiss policy targets (also referred to as Ecoscarcity method or UBP).
EDIP 97	Characterisation and Normalisation method developed for the Danish EPA See also 2003 version.
Eco-indicator 95	Distance to target method based on scientific targets, includes damage approach.
CML 92	Very widely used "midpoint" method, relatively simple characterisation, no fate or exposure, several normalisation sets.

## Join the SimaPro LCA community

Selecting software sometimes feels like becoming a member of a user community. The SimaPro user community is not only the largest and most widespread; it is also a unique community as many of the best known LCA experts belong to it. It is a community that freely shares data and experiences:

- All users with an active service contract get the same data for free (except some educational versions), so we all start from a common base.
- Our international partner network ensures local support. Many partners organise regional user meetings and trainings.
- Our email LCA Discussion list provides a unique opportunity to identify and exchange data, solve methodological problems, and so on.



### Languages

SimaPro can be run in many different languages. Currently we support Japanese, Spanish, Portuguese, Italian, German, French, Danish and Dutch; the list is expanding rapidly.

### Ordering procedure

If you are located in a country that is served by one of our partners, please order SimaPro from them. An up-to-date list of partners can be found on [www.pre.nl/partners](http://www.pre.nl/partners).

If there are no partners in your country, please download our fax order form from [www.pre.nl/simapro](http://www.pre.nl/simapro). Orders are normally fulfilled within a week by registered mail unless PRé Consultants considers it necessary to receive advance payment. Express courier service is possible at additional cost.

For further information, please contact PRé Consultants or our regional dealers.

PRé Consultants bv  
Plotterweg 12  
3821 BB Amersfoort  
The Netherlands

phone: +31 33 4555022  
fax : +31 33 4555024  
e-mail: sales@pre.nl  
web site: www.pre.nl



product ecology  
consultants

**PRé Consultants bv**  
Plotterweg 12  
3821 BB Amersfoort  
the Netherlands

phone + 31 33 4555022  
fax + 31 33 4555024  
e-mail [support@pre.nl](mailto:support@pre.nl)  
web site [www.pre.nl](http://www.pre.nl)